

Test Report

No. CANEC1826233543

Date: 02 Jan 2019

Page 1 of 7

3F ELECTRONICS INDUSTRY CORP.,LTD

NO.5, ZHENXING ROAD, LIYUHE INDUSTRY PARK, LOUCUN VILLAGE, GONGMING STREET,
GUANGMING NEW DISTRICT, SHENZHEN, GUANGDONG, CHINA

The following sample(s) was/were submitted and identified on behalf of the clients as : Silicone rubber wire and cable

SGS Job No. : CP18-067121 - SZ
Model No. : 31351806U-07 brown
Client Ref. Info. : Please see remark
Date of Sample Received : 18 Dec 2018
Testing Period : 18 Dec 2018 - 24 Dec 2018
Test Requested : Selected test(s) as requested by client.
Test Method : Please refer to next page(s).
Test Results : Please refer to next page(s).
Conclusion : Based on the performed tests on selected part of submitted sample(s), the results of Lead, Mercury, Cadmium, Hexavalent chromium, Polybrominated biphenyls (PBBs), Polybrominated diphenyl ethers (PBDEs) and Phthalates such as Bis(2-ethylhexyl) phthalate (DEHP) , Butyl benzyl phthalate (BBP), Dibutyl phthalate (DBP) , and Diisobutyl phthalate (DIBP) comply with the limits as set by RoHS Directive (EU) 2015/863 amending Annex II to Directive 2011/65/EU.

Signed for and on behalf of
SGS-CSTC Standards Technical Services Co., Ltd. Guangzhou Branch



Violet,Shi
Approved Signatory



Test Results :

Test Part Description :

Specimen No.	SGS Sample ID	Description
SN1	CAN18-262335.019	Brown plastic jacket

Remarks :

- (1) 1 mg/kg = 1 ppm = 0.0001%
- (2) MDL = Method Detection Limit
- (3) ND = Not Detected (< MDL)
- (4) "-" = Not Regulated

RoHS Directive (EU) 2015/863 amending Annex II to Directive 2011/65/EU

Test Method : With reference to IEC 62321-4:2013+A1:2017, IEC 62321-5:2013, IEC 62321-7-2:2017 , IEC 62321-6:2015 and IEC 62321-8:2017, analyzed by ICP-OES , UV-Vis and GC-MS .

Test Item(s)	Limit	Unit	MDL	019
Cadmium (Cd)	100	mg/kg	2	ND
Lead (Pb)	1,000	mg/kg	2	ND
Mercury (Hg)	1,000	mg/kg	2	ND
Hexavalent Chromium (CrVI)	1,000	mg/kg	8	ND
Sum of PBBs	1,000	mg/kg	-	ND
Monobromobiphenyl	-	mg/kg	5	ND
Dibromobiphenyl	-	mg/kg	5	ND
Tribromobiphenyl	-	mg/kg	5	ND
Tetrabromobiphenyl	-	mg/kg	5	ND
Pentabromobiphenyl	-	mg/kg	5	ND
Hexabromobiphenyl	-	mg/kg	5	ND
Heptabromobiphenyl	-	mg/kg	5	ND
Octabromobiphenyl	-	mg/kg	5	ND
Nonabromobiphenyl	-	mg/kg	5	ND
Decabromobiphenyl	-	mg/kg	5	ND
Sum of PBDEs	1,000	mg/kg	-	ND
Monobromodiphenyl ether	-	mg/kg	5	ND
Dibromodiphenyl ether	-	mg/kg	5	ND
Tribromodiphenyl ether	-	mg/kg	5	ND
Tetrabromodiphenyl ether	-	mg/kg	5	ND
Pentabromodiphenyl ether	-	mg/kg	5	ND



Unless otherwise agreed in writing, this document is issued by the Company subject to its General Conditions of Service printed overleaf, available on request or accessible at <http://www.sgs.com/en/Terms-and-Conditions.aspx> and, for electronic format documents, subject to Terms and Conditions for Electronic Documents at <http://www.sgs.com/en/Terms-and-Conditions/Terms-e-Documents.aspx>. Attention is drawn to the limitation of liability, indemnification and jurisdiction issues defined therein. Any holder of this document is advised that information contained hereon reflects the Company's findings at the time of its intervention only and within the limits of Client's instructions, if any. The Company's sole responsibility is to its Client and this document does not exonerate parties to a transaction from exercising all their rights and obligations under the transaction documents. This document cannot be reproduced except in full, without prior written approval of the Company. Any unauthorized alteration, forgery or falsification of the content or appearance of this document is unlawful and offenders may be prosecuted to the fullest extent of the law. Unless otherwise stated the results shown in this test report refer only to the sample(s) tested.

Attention: To check the authenticity of testing /inspection report & certificate, please contact us at telephone: (86-755) 8307 1443, or email: CN_Doccheck@sgs.com

Test Report

No. CANEC1826233543

Date: 02 Jan 2019

Page 3 of 7

<u>Test Item(s)</u>	<u>Limit</u>	<u>Unit</u>	<u>MDL</u>	<u>019</u>
Hexabromodiphenyl ether	-	mg/kg	5	ND
Heptabromodiphenyl ether	-	mg/kg	5	ND
Octabromodiphenyl ether	-	mg/kg	5	ND
Nonabromodiphenyl ether	-	mg/kg	5	ND
Decabromodiphenyl ether	-	mg/kg	5	ND
Dibutyl phthalate (DBP)	1,000	mg/kg	50	ND
Butyl benzyl phthalate (BBP)	1,000	mg/kg	50	ND
Bis (2-ethylhexyl) phthalate (DEHP)	1,000	mg/kg	50	ND
Diisobutyl Phthalates (DIBP)	1,000	mg/kg	50	ND

Notes :

- (1) The maximum permissible limit is quoted from RoHS Directive (EU) 2015/863.IEC 62321 series is equivalent to EN 62321 series
http://www.cenelec.eu/dyn/www/f?p=104:30:1742232870351101:::FSP_ORG_ID,FSP_LANG_ID:1258637,25



Remark:

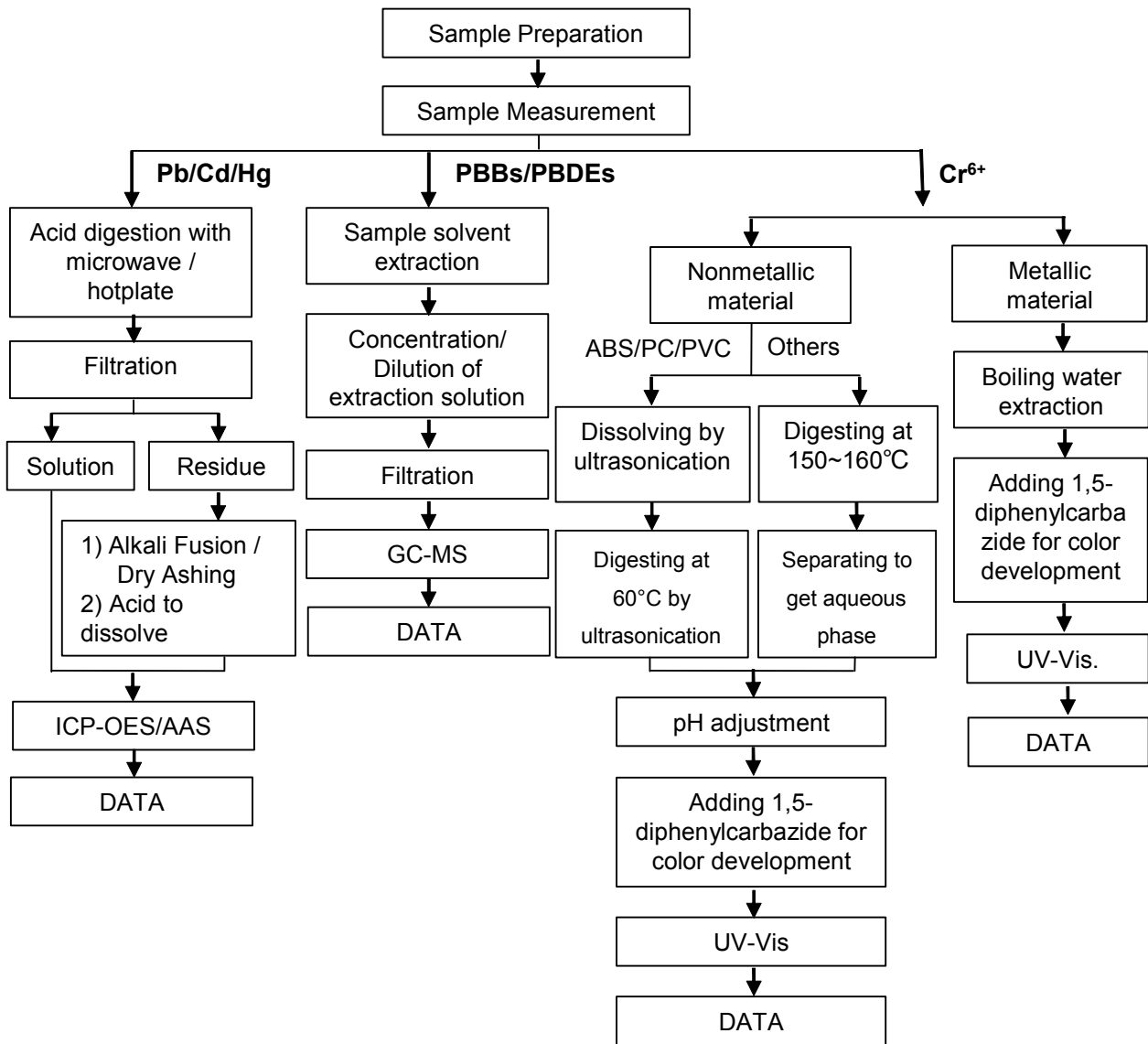
UL3068, 3069, 3070, 3071, 3074, 3075, 3098, 3099, 3100, 3101, 3113, 3115, 3122, 3123, 3125, 3126, 3127, 3128, 3132, 3133, 3134, 3135, 3136, 3137, 3138, 3139, 3140, 3141, 3142, 3143, 3144, 3145, 3167, 3171, 3172, 3207, 3208, 3209, 3210, 3211, 3212, 3213, 3214, 3215, 3216, 3217, 3231, 3232, 3239, 3240, 3241, 3243, 3251, 3252, 3253, 3254, 3262, 3267, 3268, 3276, 3278, 3304, 3306, 3318, 3322, 3326, 3332, 3434, 3487, 3512, 3513, 3519, 3520, 3529, 3530, 3535, 3536, 3561, 3639, 3640, 3641, 3642, 3644, 3645, 3566, 3580, 3585, 3605, 60245IEC03(YG), H05S-K, (N)2GFAF, SVT-S, 16878/7, 16878/8C, SF-1, SF-2, SFF-1, SFF-2, QFR-3782, QFR-1110, QFR 3068, QFR 3071, QFR 3074, QFR 3122, QFR 3132, QFR 3133, QFR 3135, QFR 3212, QFR 3213, 3239, QFR 3239-3KV, QFR 3239-6KV, QFR 3239-10KV, QFR 3239-20KV, QFR 3239-25KV, QFR 3239-30KV, QFR 3239-40KV, QFR 3304, QFR 3512, RS-GE, QFR-SR-F, QFR-SG-E, QFR-SF, QFR-RS-T, QFR-FG4-2, EMTE-MO, EMTE-S, QFR-FG4-2, QFR-RS-T, QFR-SG-E, QFR-1110, QFR-3782, SRP080, QFR-SR-F, QFR-1110, QFR-0913, QFR-0823, AGG, AGR, JG-500, JG-1000, JG-3000, QFR-SR3, QFR-SR6, QFR-RS-GE, Silicone rubber U-shaped material, SILICONE RUBBER TUBE



ATTACHMENTS

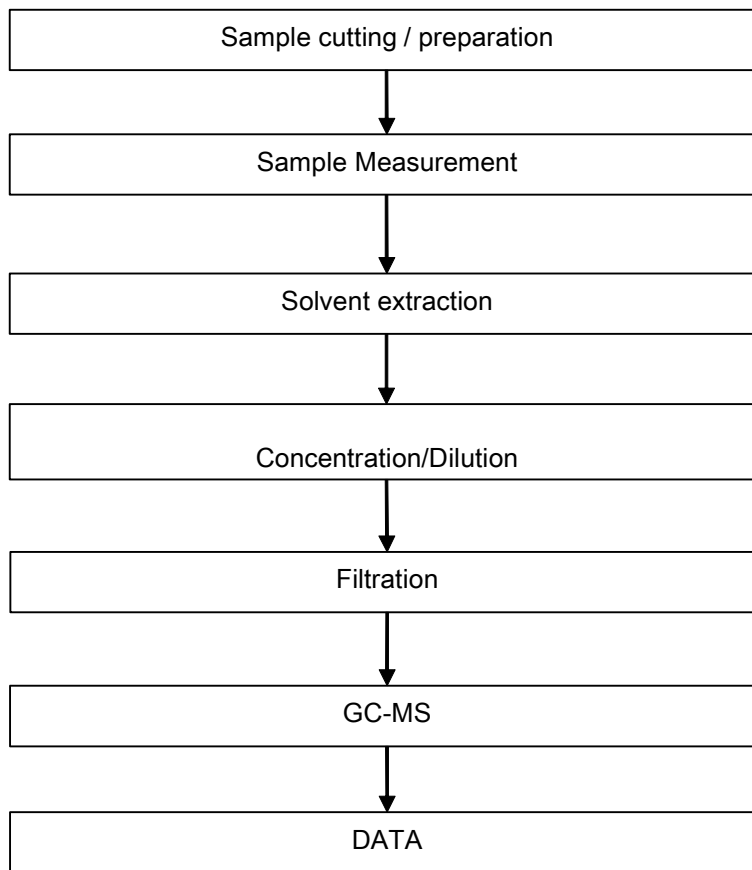
Pb/Cd/Hg/Cr⁶⁺/PBBs/PBDEs Testing Flow Chart

1) These samples were dissolved totally by pre-conditioning method according to below flow chart. (Cr⁶⁺ and PBBs/PBDEs test method excluded).

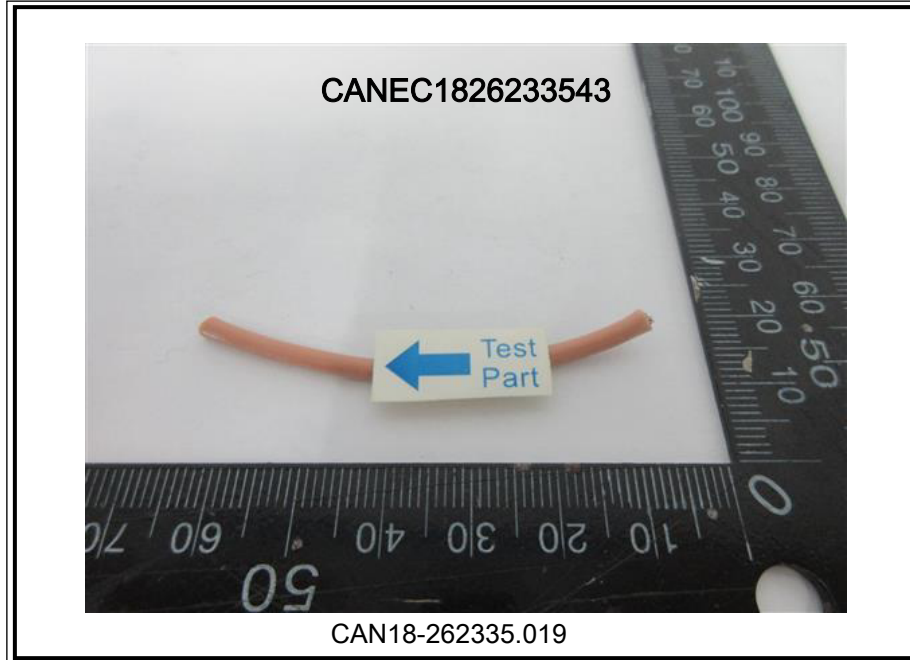


ATTACHMENTS

Phthalates Testing Flow Chart



Sample photo:



SGS authenticate the photo on original report only

*** End of Report ***